



Zuberbühler  
associates AG

# SWISS SHARE BUYBACK TURNOVER

This report documents the total CHF turnover on the second line of SIX Swiss Exchange.

## SWISS SHARE BUYBACK TURNOVER BY COMPANY

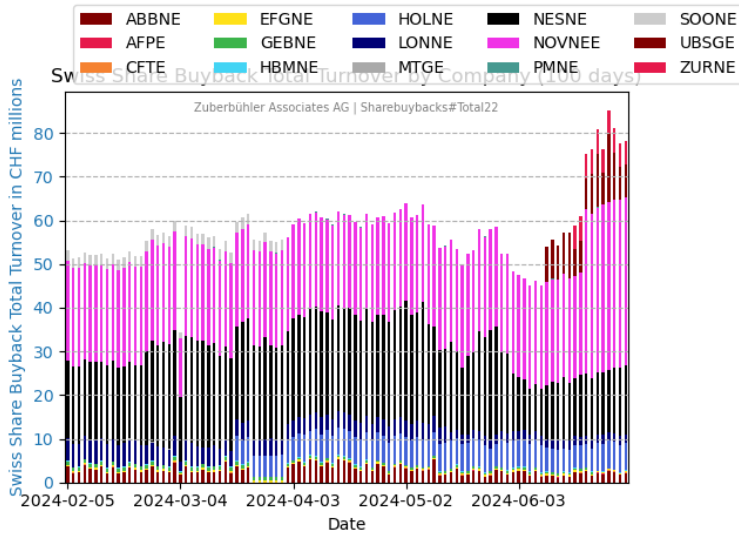


Figure 1: Swiss Share Buyback Turnover by Company (100 Days)

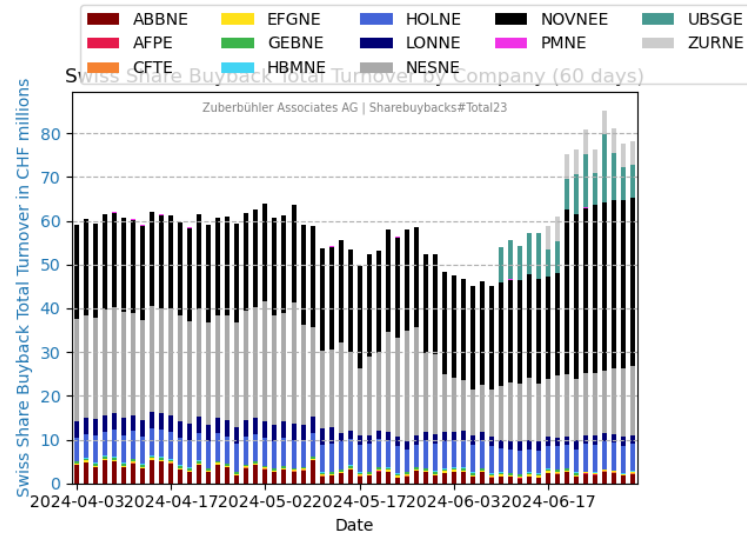


Figure 2: Swiss Share Buyback Turnover by Company (60 Days)

## SWISS SHARE BUYBACK TURNOVER BY COMPANY

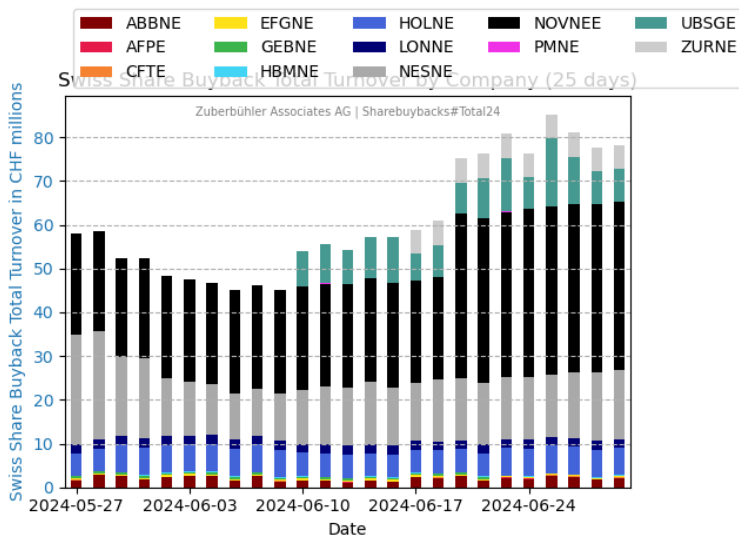


Figure 3: Swiss Share Buyback Turnover by Company (25 Days)

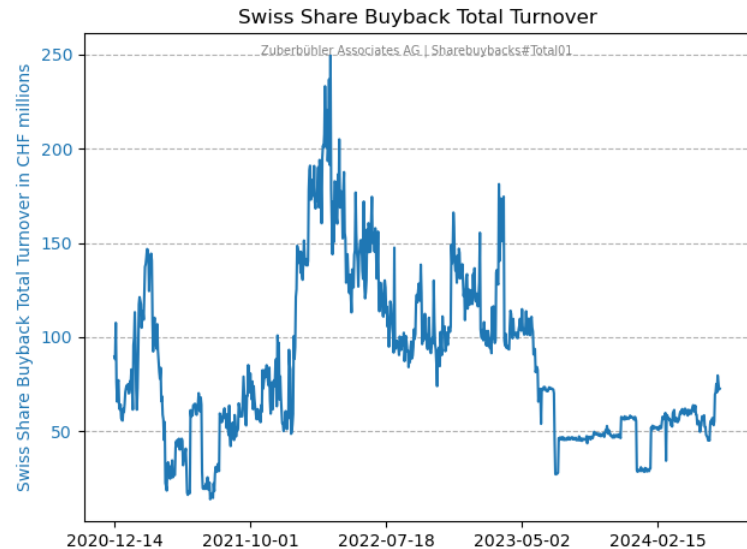


Figure 4: Swiss Share Buyback Total Turnover  
Daily Average: 5-d:74.21m 10-d:69.54m 30-d:58.14m 100-d:57.23m



Zuberbühler  
associates AG

# SWISS SHARE BUYBACK TURNOVER

This report documents the total CHF turnover on the second line of SIX Swiss Exchange.

## SWISS SHARE BUYBACK TURNOVER

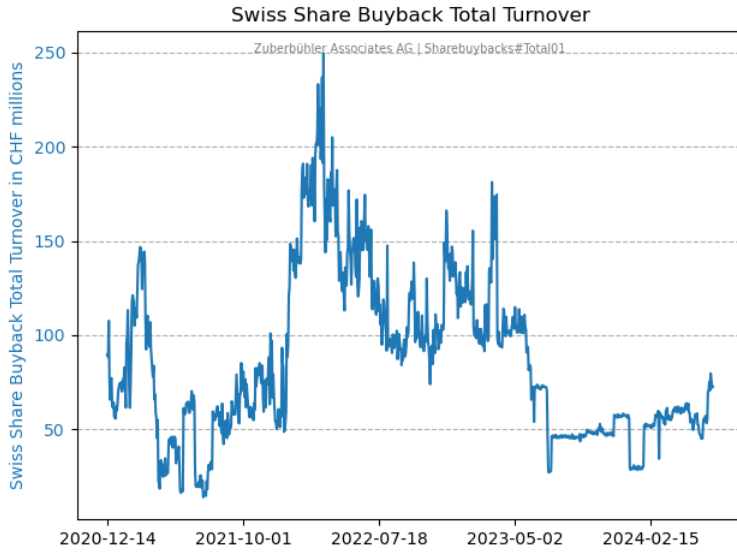


Figure 5: Swiss Share Buyback Total Turnover  
Daily Average: 5-d:74.21m 10-d:69.54m 30-d:58.14m 100-d:57.23m

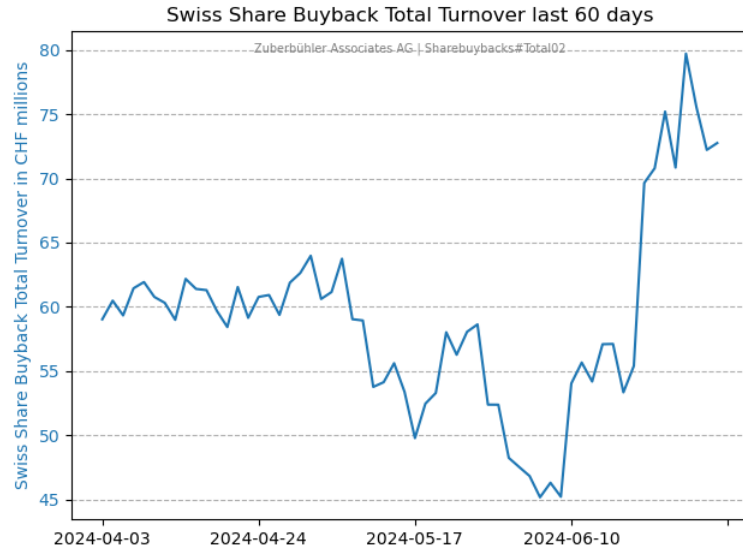


Figure 6: Swiss Share Buyback Total Turnover last 60 trading days

## SWISS SHARE BUYBACK TURNOVER CHART VS SMI

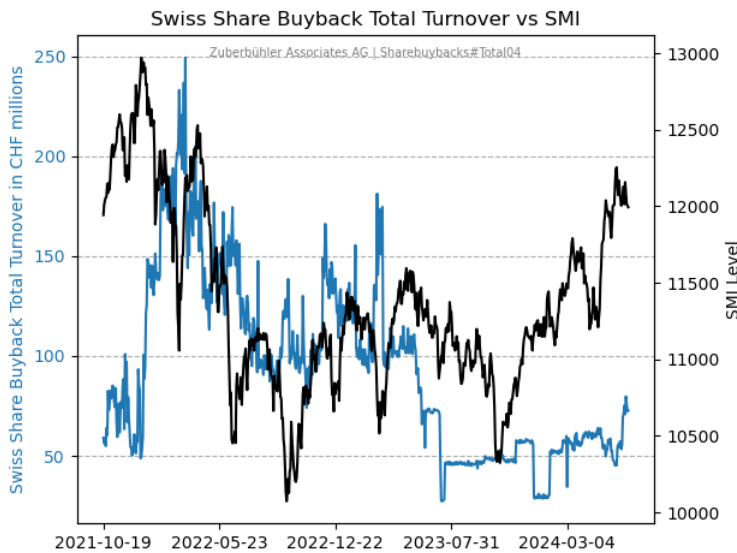


Figure 7: Swiss Share Buyback Total Turnover vs SMI

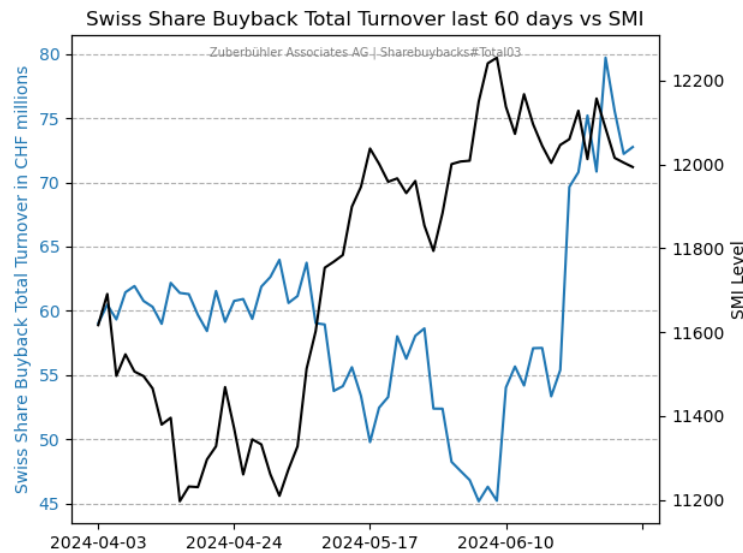


Figure 8: Swiss Share Buyback Total Turnover vs SMI last 60 trading days